

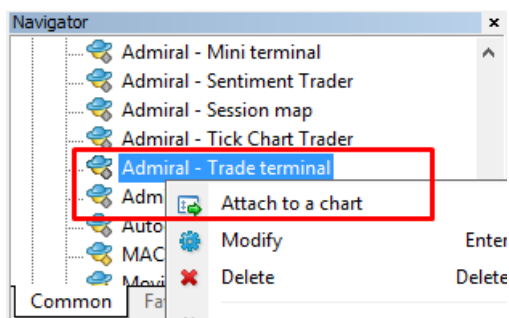
MT4 Supreme Edition Trade Terminal

In this manual, you will find installation and usage instructions for MT4 Supreme Edition. Installation process and usage is the same in **new MT5 Supreme Edition**. Simply apply the instructions described in your MetaTrader 5 Supreme Edition accordingly.

1. Trade Terminal overview

1.1. Opening the trade terminal

[Download MT4 Supreme Edition](#) and make sure MetaTrader 4 is closed during the installation process.



To initiate the trade terminal, open a chart for any symbol in MetaTrader 4 (MT4) software. Then add the expert advisor (EA) *Admiral Trade Terminal*, to the chart. Now either:

1. *double-click* on the EA in the MT4 Navigator list and drag the EA onto the chart, or
2. *right-click* its name and choose *Attach to a chart* from the context menu.

Note that you can only run one EA per chart in MT4. If an EA is already running on a chart, adding the trade terminal will replace the existing EA. To run both the trade terminal and another EA, simply open more than one chart.

Trading terminal completely occupies a full chart window. To prevent losing customisations and settings you may have made on your current chart, make sure to open a new one to run the trade terminal in.

1.2. Trade terminal components

The trade terminal consists of three components:

1. market watch
2. account info
3. order list.

You can hide the account info and order list by clicking the respective double arrows in their title bars. This gives maximum space to the market watch. You can also manually adjust the size of those three windows to optimise spacing for your individual purposes. To do so, click on the frame separating two windows and drag it accordingly.

The trade terminal shows all activity on a trader’s account, not just orders placed using the trade terminal itself. For example, if you are running an automated system or manually place trades using MT4’s own built-in features - this activity will be displayed in the trade terminal’s account summary and order list.

2. Market watch

The market watch displays a trading widget like mini terminal for each symbol. Each one of these behaves in a very similar way to the on-chart mini terminal, which is described in a separate manual.

The symbols in the trade terminal’s market watch, synchronise with MT4’s own market watch. In other words, to add or remove symbols from the trade terminal - you add or remove them from the MT4 market watch. The trade terminal will then synchronise its list within a few seconds.

Note that the speed and processor usage of trade terminal depends on the number of symbols being

displayed. Excessive processor usage can cause delays for order placement or closing input.

2.1.Placing buy/sell orders

You can place a buy or sell order for each symbol on the market watch using the *Buy* and *Sell* buttons. The status indicator at the top of each widget shows your current net position for that symbol, e.g. +0.10 if you are long 0.1 lots, or -0.10 if you are short 0.1 lots.

You can control the lot size on new orders, set a stop-loss, take-profit or trailing stop - by using the fields above the *Buy* and *Sell* buttons.

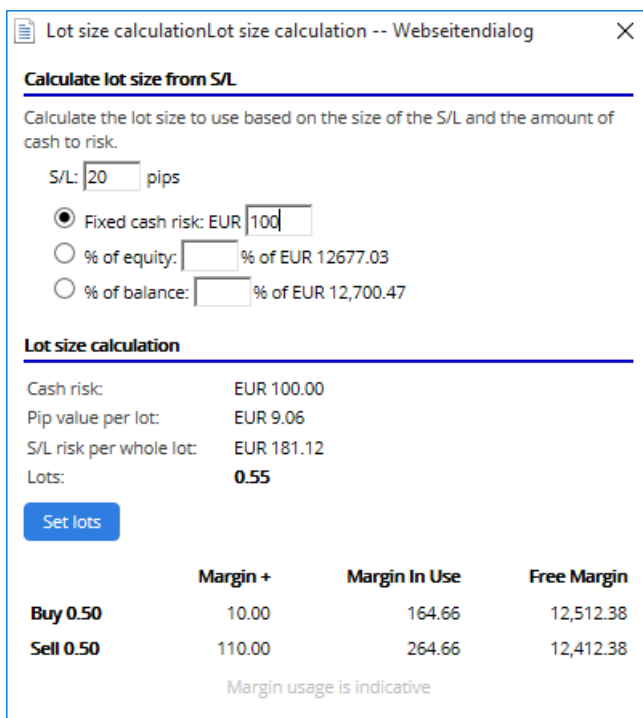
2.2.Trade calculator

You can open a trade calculator for each of these fields, by holding down the *ctrl*-key and *left-click* the respective field.

For example:

1. if you plan to trade 0.25 lots and you want to set a stop-loss with the precise equivalent of 100€ or a percentage of your equity, you can
2. *ctrl+click* into the S&L field to open a calculator and let the system calculate the exact amount of pips.

If an exact calculation isn't possible due to trade size restrictions (e.g. exclusively full lots for CFDs), the system will round down approximately.




	Margin +	Margin In Use	Free Margin
Buy 0.50	10.00	164.66	12,512.38
Sell 0.50	110.00	264.66	12,412.38

Margin usage is indicative

The calculator provides information about the margin requirements of your new order, if you *ctrl+click* the lot field.

2.3.Placing pending orders

You can place pending orders (limits and stops) by clicking on  button and choosing *New order*. It is possible to choose the order type and entry price, stop-loss, take-profit etc.

The entry price for pending orders can be defined either as a fixed price (e.g. 1.2351), or as a number of pips. For example:

1. if you choose a buy-limit and enter a value of 20 pips rather than a price, then
2. the limit order is created 20 pips below the current price.

2.4.One-cancels-other (OCO) orders


The new order form (accessible via ) button), also allows you to place OCO orders. There are two

types of OCO orders.

1. *OCO breakout* lets you specify two prices, or two values in pips, either side of the current price. The mini terminal will place a buy-stop and a sell-stop accordingly. Once one of the pending orders is filled, the other is automatically cancelled. You would typically use this when you are expecting a major price movement, but don't know whether the direction is going to be up or down, e.g. news trading. Many trading strategies are based around trading the breakout and this functionality offers a convenient interface for it.
2. *OCO reversion* informs the mini terminal to place a buy limit and sell limit, rather than a buy stop and sell stop. You would typically use this if you expect a move in either direction, followed by a return towards the current price e.g. a bounce off yesterday's high or low.

2.5. Order templates

If you find yourself using a specific type of order regularly (e.g. a buy limit 20 pips below the current price, with a 100-pip S/L and T/P), you can save this as a template for quick future re-use. Simply:

1. click  button
2. enter details in the *New order* form
3. click *Save template button* and choose a name for the pre-set.

You can then quickly execute the saved template in the future by:

1. holding down *ctrl+click*  button, then
2. choosing the saved template from the list, and
3. your order will automatically be executed.

Note that the program will not request further confirmation if you place orders this way.

2.6. Closing orders



To close an open position, click on the position marker at the top of the mini terminal (the text reading +0.10, -0.50 etc) and slide open a panel of options.

The panel shows the profitability of your order in cash and pips. The price below the profit in pips, is the position's average entry price if there is more than one open order.

Here you can opt to close all the symbol's open orders (all winning or losing trades), or to hedge or reverse the open position.

MT4 has numerous innovative features for closing orders, including:

1. *Close all* - closes all positions and pending orders
2. *Close open positions* - closes all active trades (pending orders remain open)
3. *Delete pending orders* - deletes only pending orders
4. *Close all winners* - closes all open positive orders
5. *Close all losers* - closes all open negative orders
6. *Reverse* - closes the current position and opens another one on the opposite side of the market, with identical volume
7. *Hedge* - opens an order of identical volume on the opposite side of the market, without closing the current one.

You can close individual orders with the regular MT4 window, or use the new mini terminal's various settings, extensions and pre-sets.

2.7. Symbol information

You can view symbol information by clicking on  button and choosing *Symbol information*. This opens a window showing the minimum price movement for the symbol, plus the minimum and

maximum trade sizes etc.









Symbol information: EURUSD	
Minimum price move:	0.00001
Pip size:	0.0001
Value per pip:	USD 10.0000 per lot
Current spread:	1.2 pips
Minimum trade size:	0.01 lots
Maximum trade size:	100.00 lots
Minimum stop level:	0.0 pips

2.8. Open new chart

You can open a new chart window, by clicking on  button and choosing *New chart*.

3. Account summary

The account summary shows key information about your account - like balance, equity, floating P/L, free margin and number of open positions.

Account info: 21104877 (EUR)		
Setting	Value	
Balance	7,581.94	
Equity	7,670.01	
Floating P/L	+88.07	
Free Margin	7,470.01	
Margin In Use	200.00	
Open Positions	1	
Pending Orders	0	
Pips Profit	+9.7	

You can set an alarm on any entry, by clicking on the bell icon next to it. For example, you can ask for an alarm when:

1. your free margin falls below \$1000, or
2. when the number of positions is zero (i.e. when all positions have been closed).

Alarms are displayed as pop-up alerts in MT4 and can also be sent to you by email.

When an alarm is created, the colour of the bell icon changes to yellow. If an alarm is then subsequently triggered, the colour changes to red.

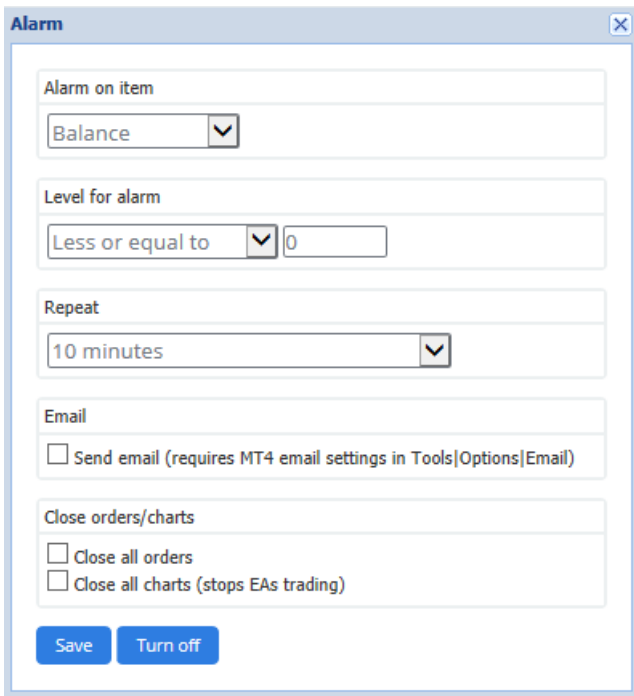
3.1. Alert levels

You set an alert by specifying a threshold (e.g. 1000) and choosing whether the alert should go off when the value:

1. exceeds the threshold
2. falls below it
3. is exactly equal to it, or
4. not equal to it.

For example:

1. if there are currently two open positions and you want to be notified if this changes in any way, then you
2. enter value 2 for the alert and choose the option *Not equal to*.



3.2.Repeating alerts

Alerts can be set to turn-off after they have been triggered, or they can be set to repeat. A repeat period tells the terminal to ignore the alert for a certain number of minutes.

For example:

1. if you have asked for an alert when free margin falls below \$1000, then
2. the repeat period prevents the alarm from being repeatedly triggered (every few seconds) if the free margin keeps fluctuating between \$999 and \$1001.

3.3.Email

You can get an optional email notification when an alert is triggered i.e. additional to having the standard alert pop up on screen. To receive an email, you need to turn on MT4's email settings, which you can configure using MT4's main menu - *Tools > Options > Email*.

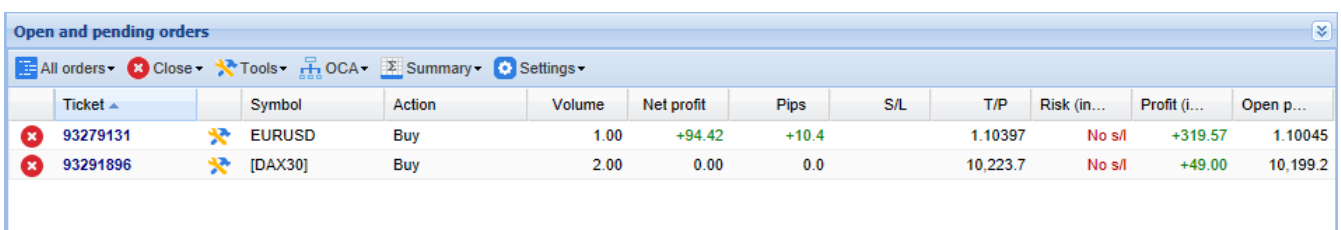
3.4.Closing charts and orders

You can configure two specific actions to take place when an alert is triggered.



1. *Close all orders* attempts to close all open positions and delete all pending orders, when the alarm is triggered. It would typically be used in relation to an alert on free margin, where you want to close out your positions to prevent a margin call.
2. *Close all charts* closes all MT4 charts apart from the trade terminal's own chart. The main purpose of this is to prevent automated systems (EAs) on other charts from placing further trades.

4.Order list

The order list displays all open positions plus pending orders on your account and provides the tools for managing those orders. It replicates the information from MT4's own order list and includes some extra details like trade duration and profitability in pips.



Ticket	Symbol	Action	Volume	Net profit	Pips	S/L	T/P	Risk (in...)	Profit (i...)	Open p...
93279131	EURUSD	Buy	1.00	+94.42	+10.4		1.10397	No s/l	+319.57	1.10045
93291896	[DAX30]	Buy	2.00	0.00	0.0		10,223.7	No s/l	+49.00	10,199.2

If the  icon next to an order changes to , it indicates that the trade terminal is carrying out

automated actions on the order e.g.

1. a trailing stop
2. an automated close, or
3. the order might be part of an OCA group.

You can check which actions are being processed, by clicking on the icon and choosing *Tasks in progress*.

4.1. Sorting the list and re-ordering columns

You can sort the order list by any of its columns. Simply click on a header such as *Ticket*, to sort in ascending order. Or click again to sort in descending order.

You may also re-arrange columns in the list by dragging the headers. Just press and hold down the left mouse button on a header, then drag the mouse pointer to the new location where you want the column.

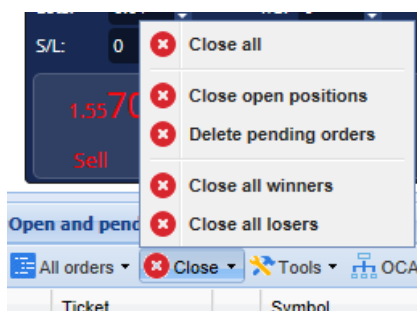
Additionally, you can show / hide columns, by clicking on the arrow next to a column and choosing which one to show or hide in the column menu.

4.2. Closing orders

You can close an open position or delete a pending order, by clicking on  button next to it.

The Close option on the toolbar above the order list, contains several options for closing multiple orders, including:



1. *Close all* - closes all positions and pending orders
2. *Close open positions* - closes all active trades (but doesn't affect pending orders)
3. *Delete pending orders* - removes all pending orders (but doesn't affect active positions)
4. *Close all winners* - closes all open positive orders
5. *Close all losers* - closes all open negative orders.



4.3. Modifying orders

You can carry out a number of actions on orders including partial close, change S/L and set a trailing stop.

To access these functions:

1. click on the  symbol next to an individual order
2. choose *All orders* under *Tools* in the menu bar above the order list -the pop-up menu will then carry out the desired action (e.g. a partial close) on every order
3. select some of the orders in the list and choose *Selected orders* from the *Tools* menu
4. click the  symbol in a summary window.

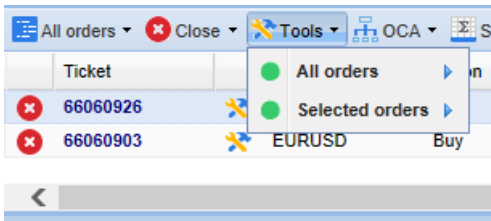
4.3.1. Selecting orders from the list

You can select several orders from the list to carry out specific actions on just the selected orders. The order list follows the standard behaviour for Windows applications.

1. Clicking on an entry, selects that row only and deselects previously selected entries.
2. Using *shift+click*, selects all the entries between the currently selected one and the item you just clicked on. For example
 1. if there are five entries in the order list, and
 2. you want to select items two through four, then you

3. click on item two and *shift+click* on item four.
3. Using *ctrl+click*, toggles an entry. If the entry in question is currently not selected, this will select it. If it is already selected, the action will deselect it. You can select all entries in the list except for one, by:
 1. clicking on the first entry, and
 2. *shift+click* on the last entry, then
 3. *ctrl+click* on the order you want to leave out.

Once you have selected some entries in the order list, you can use the *Selected orders* option in the *Tools* menu. This function is disabled if there are currently no orders selected.



4.3.2. Partial closes, S/L, T/P and T/S

You can:

1. partially close an order, and
2. set/modify its stop-loss (S/L), its profit target (T/P) or its trailing stop (T/S).

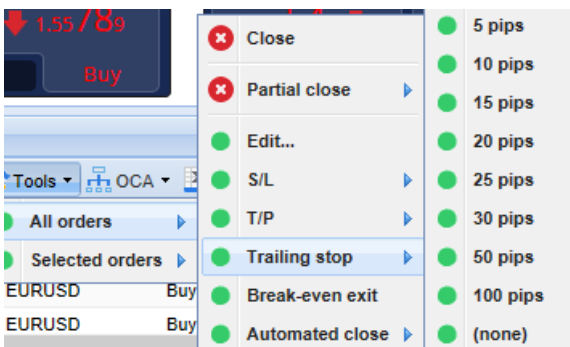
The values for stop-losses and profit targets are specified in pips, though the S/L and T/P can also be set to break-even i.e. the order's entry price.

A partial close cannot always be processed exactly. For example, you cannot do an exact 50% partial close of an order for 0.03 lots, because 0.015 lots is not a permitted size. Partial closes always round down to the nearest lot size permitted by your broker.


For example:

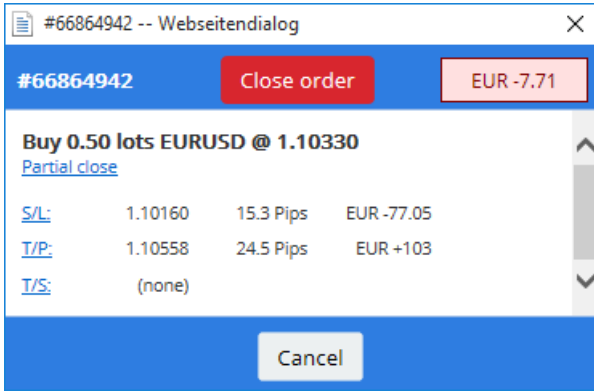
1. if you ask to close 50% of an order for 0.03 lots, then
2. the software will close 0.01 lots, leaving
3. an order for 0.02 lots.

Please note that trailing stops are processed by the trade terminal software, not your broker. The trailing stop will cease operating if you close the trade terminal (or MT4).



4.3.3. Order details

You can also open a pop-up window for each order by clicking on its ticket number or by clicking on the  icon and choosing *Edit*.



The pop-up window shows:

1. how close the S/L and the T/P are to being hit (e.g. for long orders, the distance from the current bid price to the S/L), and
2. the cash effect on the balance if the S/L or T/P is hit.

The current profit for the order is shown in the top-right of the window. It can be switched between cash and pips display by clicking on it.

You can close the order using the red button and change the S/L, T/P or trailing stop by clicking on the respective options.

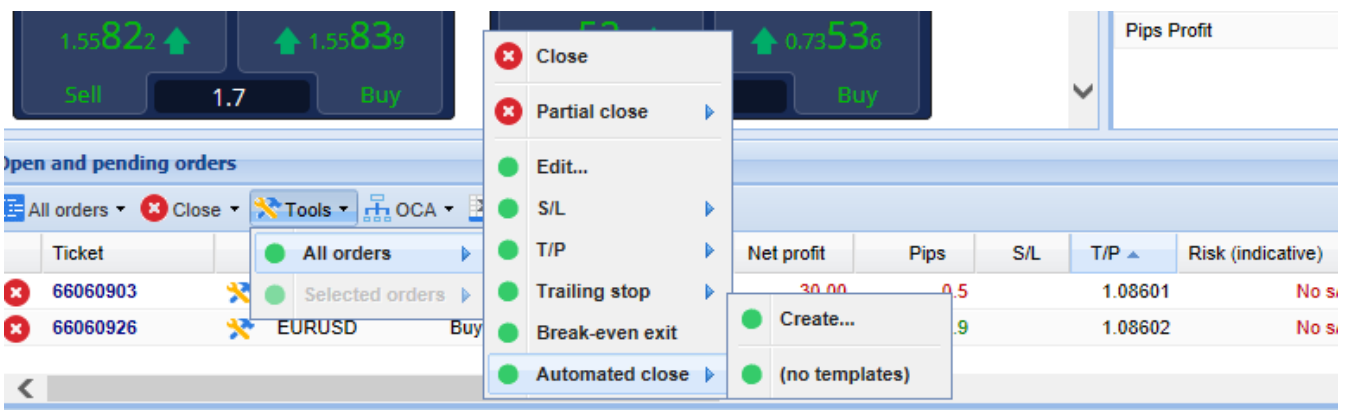
4.4. Automated closing

Automated closing lets you define rules for exiting an open position. These can consist of multiple parts (e.g. scaling out of a position when profit thresholds are met) and can include visual plus email alerts. Automated closing can also be saved as a template for quick re-use in the future.

Note that automated closes are processed by the trade terminal software, not your broker. They will cease operating if you close the trade terminal or MT4.

You can create an automated close and run an existing one, by choosing:

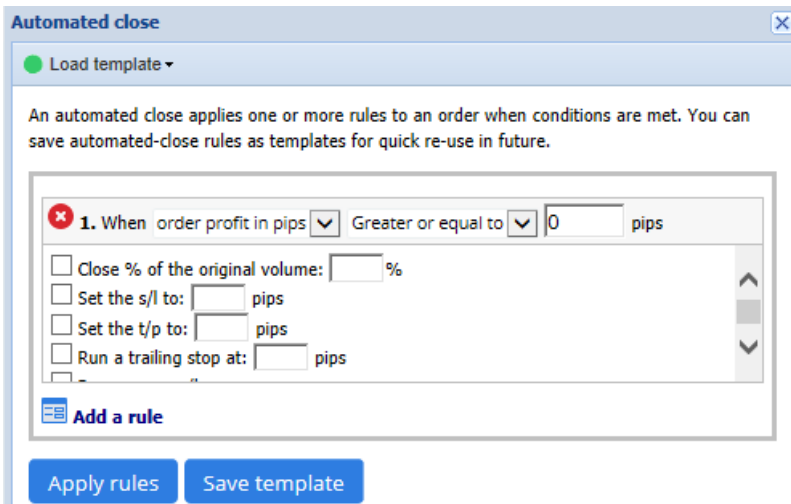
1. *Automated close* from the *Tools* menu for an order (or multiple orders), then
2. *Create* to define a new automated close rule, or
3. *Edit* if there is already an active automated close on the order.



4.4.1. Conditions/rules for automated closes

At the top of the *Automated close* form, you choose the threshold when this rule is applied.

You select the criterion - such as the order's profit in pips or duration and the value for the threshold. For example, to carry out an action once an order has been open for an hour - you choose *Order duration, greater or equal to* and enter the value of 60.



For every closing condition you set, you can define a number of actions such as closing part or all of the order, setting a stop-loss or trailing stop, or sending an alert by email. Simply tick the box next to each action you want to be carried out and fill in the corresponding fields, such as the percentage of the order to close.

Please note that the percentage of an order to close, is specified in relation to its original size - not the current size following any previous partial closes.

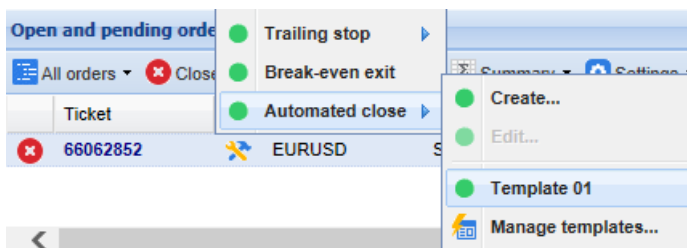
For example:

1. if you have two stages, and each of them is configured to close 50% of the order, then
2. the order will be completely closed when the second stage is reached.

4.4.2. Saving automated closes as templates

Once you have defined an automated close, you can save it as a template by clicking on *Save template* button. In the future, a saved template can be applied to an order by:

1. choosing *Automated close* from the *Tools* menu, and
2. selecting the template from the sub-menu.



You can organise your list of saved automated close templates and remove any you need no longer, by choosing *Manage templates* from the sub-menu.

Note that the program will not request further confirmation, if you place orders this way.

Automated close templates are saved locally on your PC. This means that if you want to use MetaTrader 4 Supreme Edition on a different PC, you will have to:

1. transfer your templates to the PC you want to use them on, or
2. create new ones.

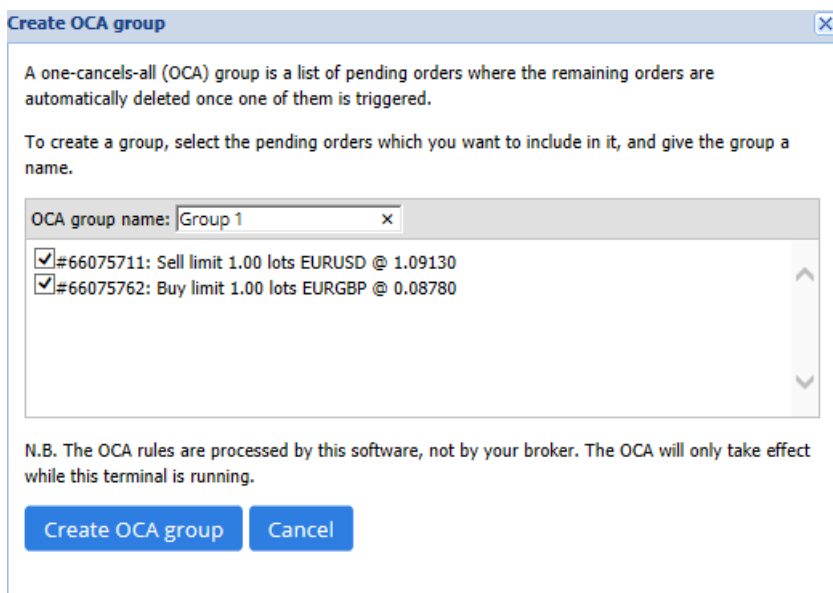
4.5. OCA groups

The trade terminal lets you create an OCO group of pending orders - where all the remaining orders are automatically discarded, when one of the orders is filled.

An OCO order is simply an OCA group, where there are only two orders in the group.

Please note that OCA groups are processed by the trade terminal software, not your broker. They will cease operating if you close the trade terminal or MT4.

You create an OCA group by choosing *Create OCA group* from the *OCA* menu. This option is only available if you have at least two pending orders. Simply choose a memorable name for the group and tick the pending orders you want to include in it.

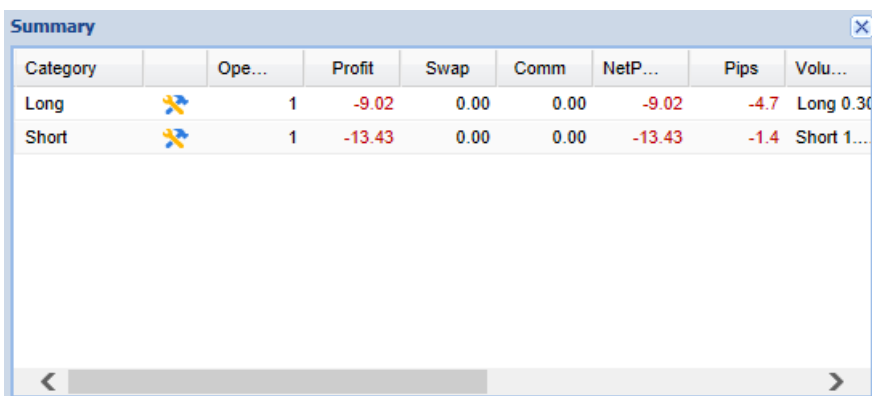


A single order can belong to multiple OCA groups and orders in a group can be for different symbols. You can delete an OCA group by choosing *Delete OCA group* from the *OCA* menu. Note that this does not delete the pending orders - just prevents the trade terminal from running the OCA rule on those orders.


4.6. Order summary

You can view summaries of your open positions (e.g. by symbol, direction, duration etc.), using the *Summary* menu on the toolbar above the order list. This opens a floating window, containing aggregated information about the orders such as:

1. the summed up profit/loss of all open positions
2. the total volume of a trade value
3. long and short positions individually.



Category	Ope...	Profit	Swap	Comm	NetP...	Pips	Volu...
Long	1	-9.02	0.00	0.00	-9.02	-4.7	Long 0.30
Short	1	-13.43	0.00	0.00	-13.43	-1.4	Short 1...

You can carry out actions on all the orders in one category, by clicking on its  icon

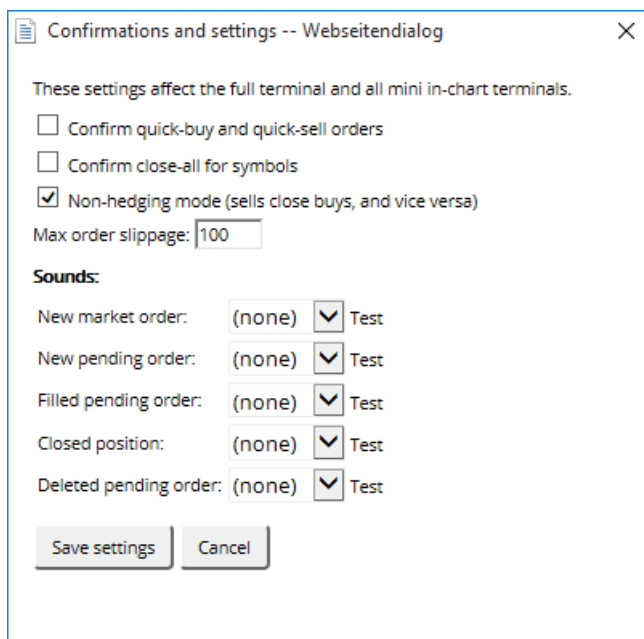
4.7. Settings

You can control the settings for the trade terminal (and subsequently all copies of the on-chart mini terminal), by choosing *Confirmations and preferences* from the *Settings* menu (in the toolbar above the order list).

There are several options available:

1. *Confirm new orders* - turns on / off confirmations when you place a quick order, by clicking on the green and red Buy and Sell buttons in a trading widget
2. *Confirm close-all* - turns on or off confirmations when you close all orders for a symbol, by clicking on its status indicator

3. *Hedging mode* - the trade terminal's default, which is the standard behaviour for MT4 as a whole. If you place a buy order and then place a sell order for the same symbol (or vice versa), the software will create two open orders. However, you can also choose to run the software in non-hedging mode. If you have an open buy order and you place a sell order - the sell closes the buy rather than creating a new order.



For example:

1. if you are long 0.3 lots and you sell 0.1 lots, then
2. you will be left with a buy order for 0.2 lots.

Usually, the deactivated hedging can be used to close orders faster. Clicking on the interface button representing the order type currently not open, allows the user to close or partially close the open order. If hedging was activated, it would merely open new orders.

4.7.1. Sound alerts

Furthermore, the displayed menu allows you to set sound notifications for certain events. Choose a sound and set it to an event, including:


1. *New market order*
2. *New pending order*
3. *Pending order activated*
4. *Position closed*
5. *Pending order deleted.*

The *Test* button allows you to play-back the chosen sound.

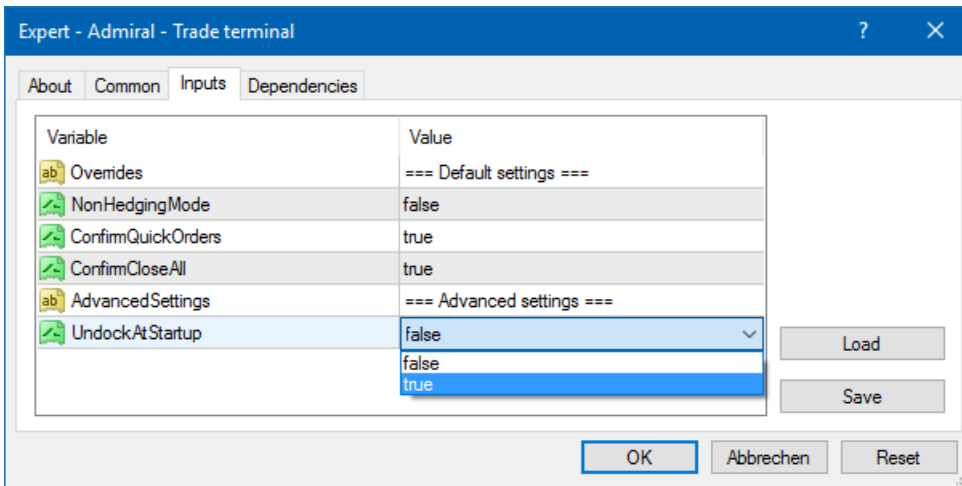
Make sure to save your settings, or they will be discarded.

4.7.2. Undocking the trade terminal

This allows you to trade from multiple monitors at the same time.

You can undock the trade terminal into a floating window, by clicking on  *Settings* button and choosing *Undock terminal*. You can continue to trade while the terminal is undocked from its chart. To re-dock the terminal, click *Tools* button again and choose *Re-dock terminal*.

Alternatively, you can change this setting when activating the trade terminal. To do this, change into the *Inputs* tab and setting *UndockAtStartup* to true.



5. More info

Feel free to visit our English [YouTube channel](#), which represents live trade recordings, tutorials, a [trade terminal tutorial](#) and playlists of extension-highlights.

Disclaimer:

Please note that these add-ons are provided free of charge by an external, technical service provider, based on the Expert Advisor technology in the MT4 & MT5. As with all expert advisors (EA) plugins, these are only active when your MetaTrader has established connection to the internet and our servers. Although EA`s have been thoroughly tested and their technical reliability should be sufficient, malfunction can never be fully ruled out. Make sure you fully understand the functionality of all add-ins and extensions, e.g. by practicing their use extensively on a demo account. You should acknowledge before using EA`s that Admiral Markets is not liable for loss or other damage caused by your use of the EA`s.